

YAYA  
VINTAGE BARCELONA



## ABOUT YAYA VINTAGE

"The true passion of this #lifestyle that connects you with people around the world and makes you spend endless hours in search of the best pieces for them".

Soy Yaya, una **buscadora de tesoros** para darle un toque único a tu hogar y para hacer de tus proyectos verdaderas obras de arte.

✉️ Contáctame y encontraremos los mejores muebles del movimiento Mid-Century Modern, Space Age y Post Modern para ti y tus proyectos.

---

I am Yaya, a **treasure hunter** to give to your home a unique touch and to make your projects true works of art.

✉️ Contact me and we will find the best furniture from the Mid-Century Modern, Space Age and Post Modern movement for you and your projects.

## SHIPPING METHODS



EXPRESS AIR



VAN /TRUCK



SEA CONTAINER

\*In all shipping methods, we protect your pieces with the utmost care.  
We take care of the packaging, you just enjoy your new piece.

## 'PRO'GRAM

As a design professional, you are welcome to unique benefits that are intended to help your business thrive. Enjoy access to incomparable inventory, personalized support, marketing opportunities and trade-exclusive pricing.

Exclusively for design professionals.

**I'M PRO**

## DESIGNERS

ALVAR AALTO

YNGVE ESKSTRÖM

VICO MAGISTRETTI

AFRA & TOBIA SCARPA

CHARLOTTE PERRIAND

GASTONE RINALDI

ILMARI TAPIOVAARA

BOREK SIPEK

RADBOUD VAN BEEKUM

MICHEL DUCAROY

ANDREA BRAZZI

MARCO MENCACCI

VINCENT DARRÉ

MATTEO THUN

JOSEP LLUSCÀ

## BRANDS & FACTORIES

**artek**

**Cassina**

**vitra.**

**driade**

*Alias*

**MAXALTO**

**Artemide**

**MAGIS**

**SWEDESE**

**HARNINK**

**SAWAYA & MORONI**  
DESIGN ICONS SINCE 1984

**ligne roset®**

**THANK YOU** FOR BEING PART OF **YAYA VINTAGE**



**ARTEK** DINING SET designed by **Alvar Aalto**

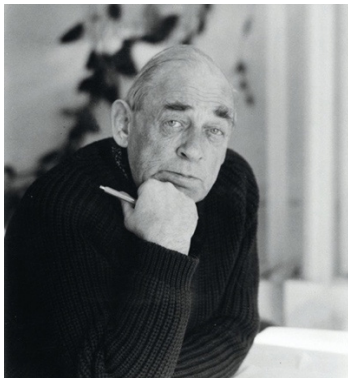
**SKU** YV101





One of the most **iconic furniture**, by Alvar Aalto, considered to be one of the greatest Finnish architects and **designers** in the world, **modernist** and **humanist** who focused his works heavily in elements of organic geometry and the use of natural materials.

---



## ABOUT ALVAR AALTO

Hugo Alvar Henrik Aalto (1898 – 1976) was the best-known Finnish architect of his generation. His work includes architecture, furniture, textiles, and glassware, as well as sculptures and paintings. However, he never regarded himself as an artist, seeing painting and sculpture as “branches of the tree whose trunk is architecture.” Aalto’s early career ran parallel with Finland’s rapid economic growth and industrialization during the first half of the 20th century. Many of his clients were industrialists.

## DETAILS

### Creator

Alvar Aalto (designer)  
Artek (Manufacturer)

### Period

1950-1970

### Condition

Good wear consistent with age and use  
RTable fixed leg

### Design

Set of  
Chair N. 66 (4 uts)  
Half circumference (2uts)  
Rectangular table (1 ut)

### Materials

Birch wood

### Dimensions

Chair 50x50x70  
RTable 120x70x74  
CTable 70x40x74





**QUINTA** CHAIR designed by **Mario Botta**

**SKU** YV102



The "Quinta" **post modern** chair by **Mario Botta** is an **iconic** piece of Italian design, manufactured by Alias around 1980. It has a minimalist style, executed in a really appealing way that makes this chair a **fantastic** eye-catcher from every angle



## ABOUT MARIO BOTTA

Born in Mendrisio in 1943, Mario Botta attended the Liceo Artistico (High School) in Milan and graduated in architecture from IUAV, Venice in 1969. During his time in Venice, Botta met Luis Kahn and worked at Le Corbusier.

Strongly influenced by two great masters, his design style evolved into pure, geometric and imposing forms. Brick is a key material in his body of work, used as cladding to accentuate the severity of his designs. All his work has a spiritual connotation, through which he demonstrates the importance of architecture as a means of expression of human memory.

## DETAILS

### Creator

Mario Botta (designer)  
Alias (Manufacturer)

### Period

1980-1989

### Condition

Excellent  
Wear consistent with age and use  
No mark, 4 original studs

### Design

"Quinta" chair

### Materials

Metal

### Dimensions

45x55x95





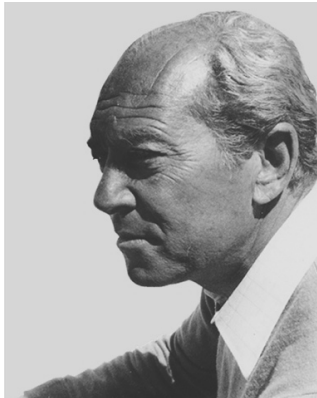


**DAFNE** FOLDING CHAIR (colorful set) designed by **Gastone Rinaldi**

**SKU** YV103



In 1978 Gastone Rinaldi designed for his company, La Thema, this **folding** chair, with slender and **graceful** lines. The chair is in painted metal square tube, the seat in beech wood, also painted. The chairs in question are the **first production**. They have the Thema made in Italy sticker (missing on one of the chairs). They have been heavily used, missing some of the rubber feet and the finish caps. Their vintage look is **lived in**, and also appealing for that reason.



## ABOUT GASTONE RINALDI

Gastone Rinaldi was born in Padua on 16 November 1920. In 1916 his father Mario had established RIMA, a company for the production of metal furniture. Gastone enrolled in the Faculty of Economics, but he was passionate about design and sport. However the internal relations within RIMA became complex and in 1974 Rinaldi established Thema. In 1978, he obtained a nomination for the Compasso d'Oro for the armchair Arianna and in 1981 another for the folding chair Dafne. Thema closed in 1989, Gastone Rinaldi died in Padua on 02 March 2006.

## DETAILS

### Creator

Gastone Rinaldi (designer)  
Thema (Manufacturer)

### Period

1970-1979

### Condition

Good  
Wear consistent with age and use  
Attribution mark

### Design

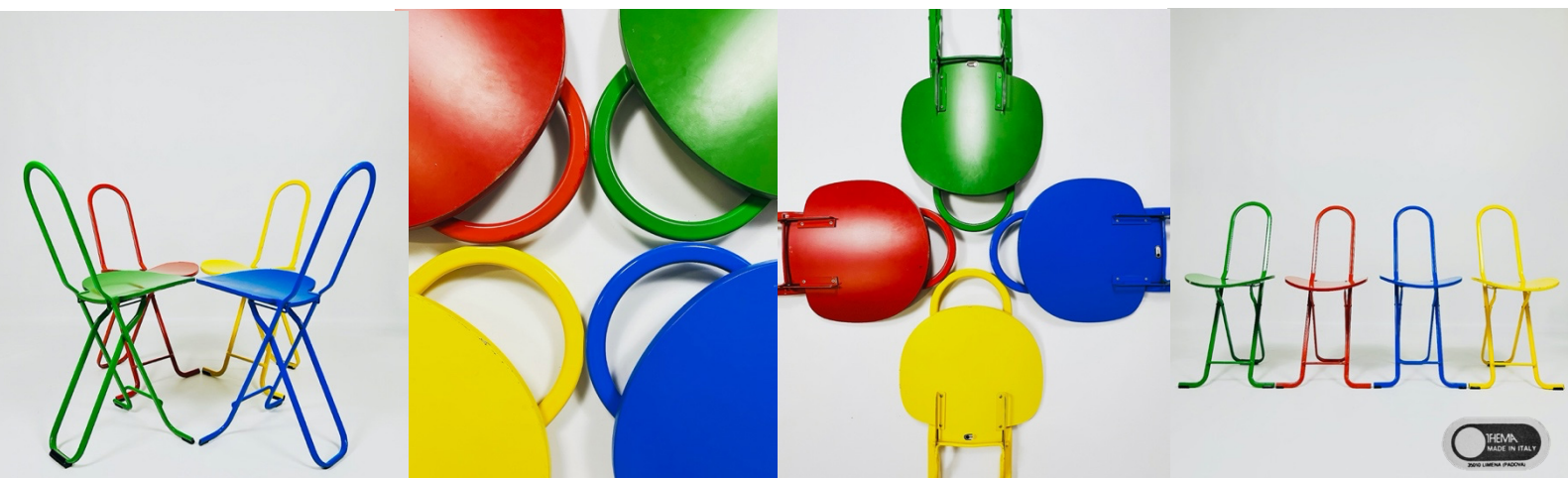
Dafne folding chair  
colorful set

### Materials

Metal  
Lacquered wood

### Dimensions

36x52x80







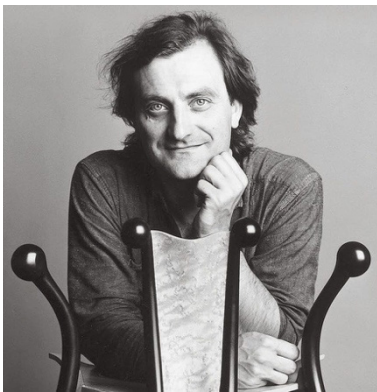
**JASNKY CHAIR** designed by **Bořek Šípek**

**SKU** YV104



The 'JANSKY' chair has been designed in 1986-1988 by Bořek Šípek, as usual with all his **remarkable** designs with design in front of functionality. Rare to find in black ash wood and dark purple metal framing this **unique chair** manufactured by the Italian Driade company are early edition chairs.

---



## ABOUT BOŘEK ŠÍPEK

Born in Prague, he was renowned for his individual, unusual, colorful, and rich style. He experimented with unexpected and often opulent shapes. Šípek is said to be the father of "neo-baroque". His architectural works and other designs are known worldwide, and his firm retains offices in Amsterdam, Prague, and Shanghai.

He was the architect of Prague Castle under the presidency of Václav Havel, and the designer of Havel's Place.

Šípek died in 2016 at the age of 66

## DETAILS

### Creator

Bořek Šípek (designer)  
Driade (Manufacturer)

### Period

1980-1989

### Condition

Excellent  
Wear consistent with age and use  
Attribution mark

### Design

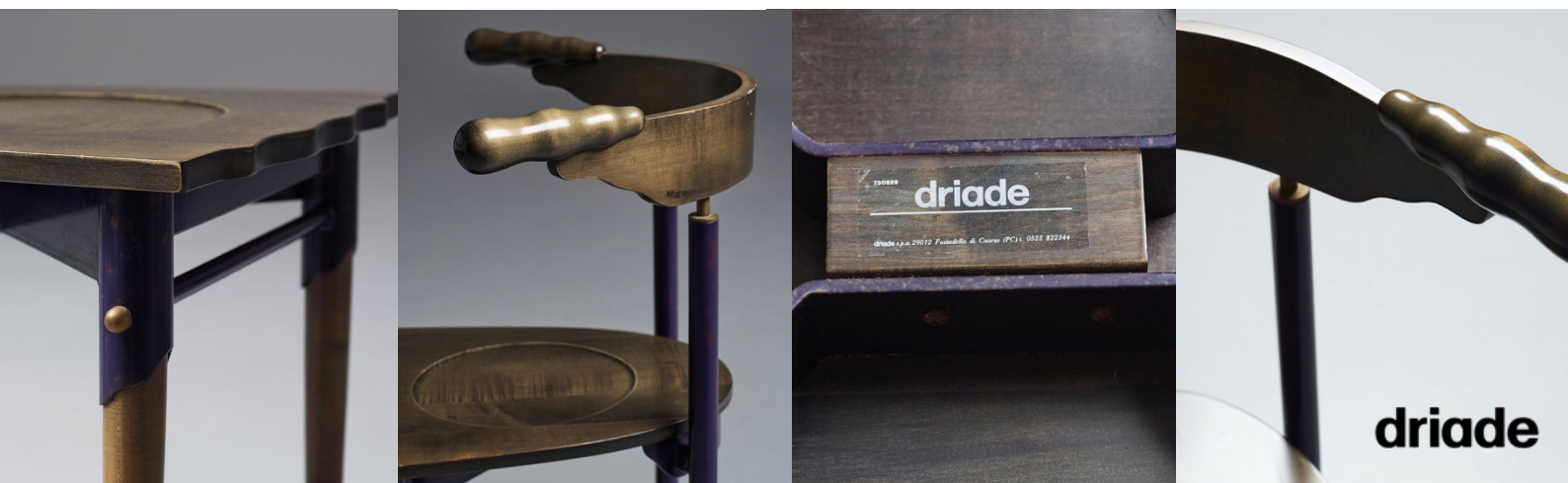
'Jansky' chair

### Materials

Black Ash wood  
Lacquered metal  
Brass details

### Dimensions

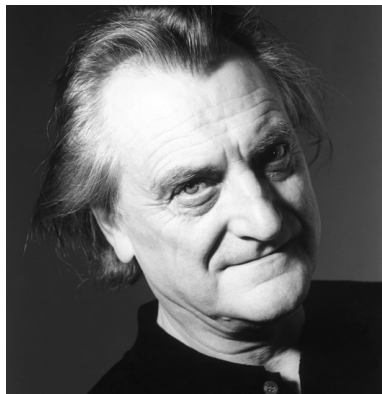
43x61x81







This **chair** has been constructed with different materials, **wood, copper** and **steel**. The sitting has been carved in wood, black painted. The side legs are of steel covered with a stain paint. The back is of **real copper**, hammered in a round form. Beautiful design with round, organic and quadric forms. **Vitra** produced this chair in a **limited production**, real collector item.



## ABOUT BOŘEK ŠÍPEK

Born in Prague, he was renowned for his individual, unusual, colorful, and rich style. He experimented with unexpected and often opulent shapes. Šípek is said to be the father of "neo-baroque". His architectural works and other designs are known worldwide, and his firm retains offices in Amsterdam, Prague, and Shanghai.

He was the architect of Prague Castle under the presidency of Václav Havel, and the designer of Havel's Place.

Šípek died in 2016 at the age of 66

## DETAILS

### Creator

Bořek Šípek (designer)  
Vitra (Manufacturer)

### Period

1980-1989

### Condition

Excellent

Wear consistent with age and use  
Attribution mark

### Design

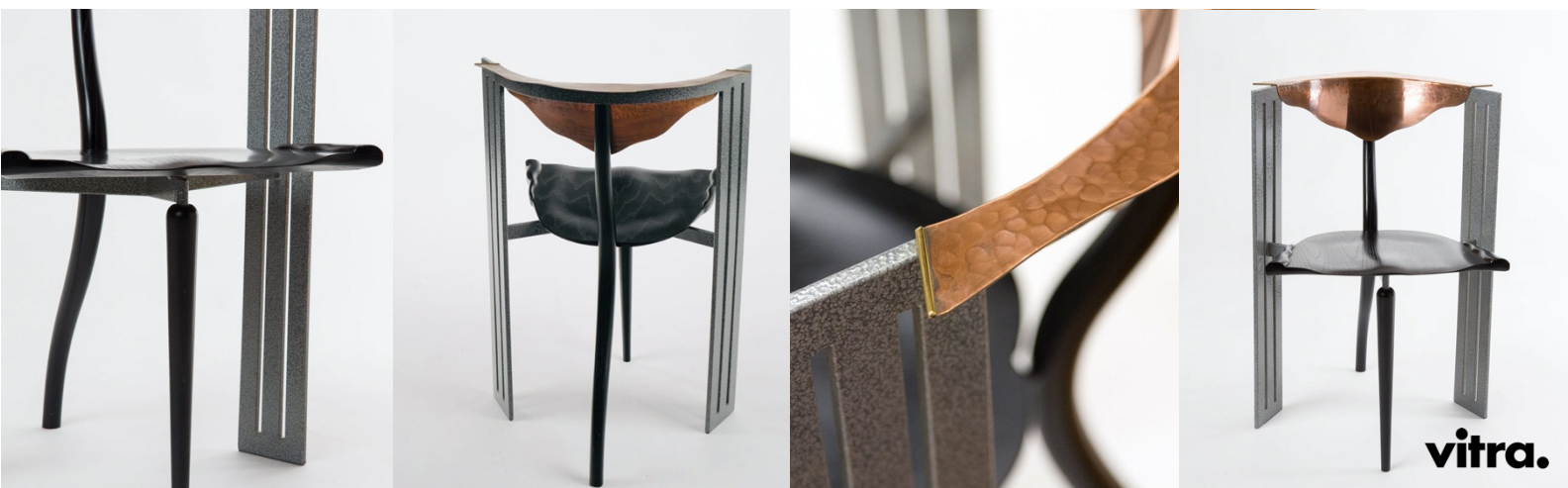
'Ota Otanek' chair

### Materials

Carved Wood  
Lacquered steel  
Cooper (backrest)

### Dimensions

52x60x75



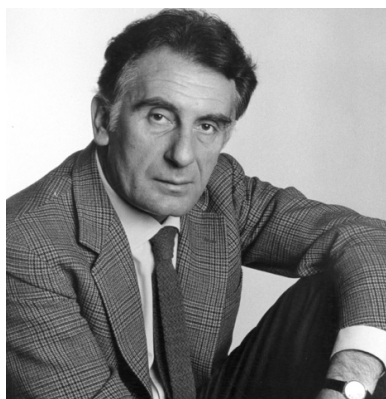








"Marema" complete set of **four** low stacking nesting tables by Gianfranco Frattini for Cassina. Designed mid-1960s, rare example of this designer and his designs using **plastic**. The set stack with all four pieces of different heights forming the effect of 'one' piece.



## ABOUT GIANFRANCO FRATTINI

Gianfranco Frattini was born in Padua on 15 May 1926. He graduated from Milan Polytechnic with a degree in Architecture in 1953 and joined Gio Ponti's studio. As early as 1954, thanks to Ponti, he began working with Cesare Cassina, who would always remain an important figurehead for him. He was one of the founders of ADI and was involved in the management of the Triennale di Milano on several occasions. He opened his own design studio, initially with Franco Bettonica, in Via Lanzone, Milan. He worked with numerous companies in the field of furniture and lighting design including Bernini, Arteluce, Knoll and Artemide

## DETAILS

### Creator

Gianfranco Frattini (designer)  
Cassina (Manufacturer)

### Period

1960-1969

### Condition

Good  
Wear consistent with age and use  
Attribution mark

### Design

Marema stacking tables  
Completed Set of 4

### Materials

Plastic  
Ivory color

### Dimensions

43x43x38







An **iconic** armchair designed by Andrea Branzi for **Cassina** of Italy and dating to the late 20th century. The Revers chairs are made of solid curved beechwood and a grey lacquered aluminium frame. With their **fantastic** sculptural armrests they are a **real eye-catcher** in every home



## ABOUT ANDREA BRANZI

Andrea Branzi architect and designer, graduated in Florence in 1967; he now lives and works in Milan. From 1964 to 1974 he was a member of Archizoom Associati: protagonists of the Florentine Radical Architecture movement. A leading member of Alchimia studio, founded in 1976, he was involved in the Memphis Group from 1981 onwards. In 1982 Branzi opened his own studio to devote himself to architecture, urban planning, and interior and industrial design. In 1983 he was one of the founders of the Domus Academy in Milan, the first international school specializing in industrial design, design management, and fashion.

## DETAILS

**Creator**  
Andrea Branzi (designer)  
Cassina (Manufacturer)

**Period**  
1990-1999

**Condition**  
Excellent  
Wear consistent with age and use  
Attribution mark

**Design**  
Revers chair  
3 units available

**Materials**  
Beech wood  
Lacquered aluminium

**Dimensions**  
63x49x76





**DESIRÉE** CHAIR designed by **Yngve Ekström**

**SKU** YV108





One of the **oldest chairs** in our store, produced in 1954, Désirée is a collection of outdoor furniture designed by **Yngve Ekström**, designer and founder of the Swedish brand **Swedese**. This elegant series evokes the 1950s, when the aim of designers and architects was to blur the line between the **interior and exterior** of a home, incorporating elements from one into the other.



## ABOUT YNGVE EKSTRÖM

Yngve Ekström was a Swedish furniture designer, wood carver, sculptor and architect and an important figure in the evolution of the Scandinavian Modernism movement. Yngve Ekström is best known for the "Lamino" armchair, an ergonomic and minimalist easy chair that he designed in 1956 and which has been in continuous production ever since.

Ekström was the co-founder of the furniture manufacturer ESE-möbler (later renamed Swedese) with his brother Jerker and business partner Sven Bertil Sjöqvist. Ekström worked at Swedese for over 40 years until his death in 1988.

## DETAILS

**Creator**  
Yngve Ekström (designer)  
Swedese (Manufacturer)

**Period**  
1950-1959

**Condition**  
Excellent  
Wear consistent with age and use

**Design**  
Desirée chair

**Materials**  
Lacquered steel  
Red fabric

**Dimensions**  
63x49x76

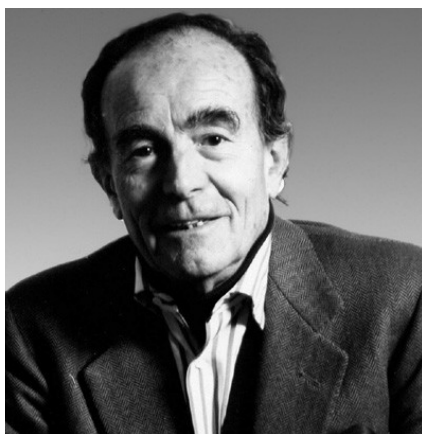








Magistretti designed these chairs with both **materiality** and **structure** in mind. The S-shaped curve of the legs fade into the seat and the back rest, creating moments of **hollowness** and **sculpture** but also adding much needed **stability** to the thin plastic legs.



## ABOUT VICO MAGISTRETTI

**Vico Magistretti** (October 6, 1920, Milan – September 19, 2006, Milan) was a highly influential 20th century Italian furniture designer and architect known for his experimental yet remarkably harmonious designs that ranged from diminutive decorative furnishings to elaborate architectural façades. During his career, Magistretti earned numerous awards for his contributions to Italian furniture design and product design during the postwar era. Examples of his work include the Ecclise table lamp for Artemide (1966), which won Vico Magistretti his first Compasso d'Oro award in 1967 and the *Selene* stacking chair for Artemide (1968)

## DETAILS

**Creator**  
Vico Magistretti (designer)  
Artemide (Manufacturer)

**Period**  
1960-1969

**Condition**  
Excellent  
Wear consistent with age and use  
Attribution mark

**Design**  
Set of  
Selene chair (2 units)  
Stadio 80 dining table (1 unit)

**Materials**  
Plastic (green)  
Recently polished

**Dimensions**  
52x48x75  
80x80x72







**"BEE" LAMP** designed by **Vincent Darré**

**SKU YV110**





The designer has imagined a **poetic picnic** with the store, where, as in fairy tales, each object comes to life. An enchanted world where the influences of La Fontaine, Cocteau and Trenet mingle with a thousand and one **animals**. While the furniture and **decorative objects** are inspired by a fantasy bestiary, the fashion line is punctuated by country-style prints.



## ABOUT VINCENT DARRÉ

A man of art in many ways: surrealist designer, stage designer, art collector and polymath.

As a native Parisian, Vincent seemed to have absorbed the whole essence of this city, with its artistry and high aesthetics.

The family of intellectuals gave him the first foundation of his worldview; by the way, the uncle of Vincent Darré was the famous French-Spanish writer, screenwriter and politician Jorge Semprun.

In the liberated 70s, Vincent enters the circle of European jetsetters and earns himself a dandy fame.

He begins his professional career with Karl Lagerfeld at *Fendi*, then moves to the *Moschino* fashion house. Later he becomes the art director of *Unqaro*.

## DETAILS

**Creator**  
Vincent Darré (designer)  
Monoprix (Manufacturer)

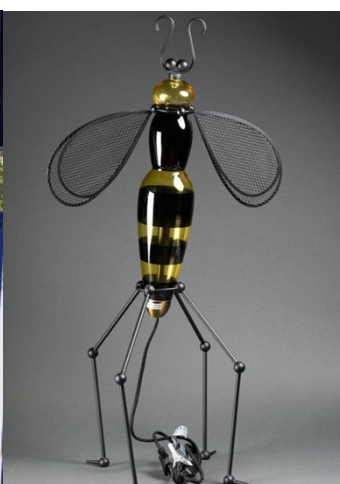
**Period**  
2020-2021

**Condition**  
Excellent

**Design**  
'Bee' lamp

**Materials**  
Painted glass  
Lacquered Metal

**Dimensions**  
63x49x76





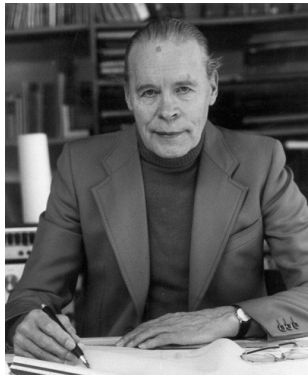
**DINING CHAIRS SET** designed by **Ilmari Tapiovaara**

**SKU** YV111





These robust chairs by Ilmari Tapiovaara feature a **geometric frame** for the patinated cognac **leather** seating and backrest. Besides the rich patinated leather it has decorative openings where back and seating come together. The leather is attached to the **curved** backrest. The joints are all very visible, which enhances the design of these Finnish chairs.



## ABOUT ILMARI TAPIOVAARA

Ilmari Tapiovaara was born in Hämeenlinna (Finland) in 1914 and shared a home with his 12 siblings. From a young age, Tapiovaara was in close contact with nature, as his family was involved in forestry-related occupations; his father was a forest ranger and his grandfather a cabinetmaker. The family spent the summers in the Finnish countryside, and this remained an important value consistently present in the designer's work. As Tapiovaara once said, *"Nature is the best and closest manual for the industrial designer."*

## DETAILS

**Creator**  
Ilmari Tapiovaara (designer)  
La Permanente Mobili Cantù  
(Manufacturer)

**Period**  
1950-1959

**Condition**  
Good  
Wear consistent with age and use

**Design**  
Set of 4 Dining chairs

**Materials**  
Cognac leather  
Dark Beech wood

**Dimensions**  
48x60x92





**ULISSE** FOLDING STOOL designed by **Ivan Loss**

**SKU** YV112



This 'Ulisse' stool / **walking stick** combination was designed by Ivan Loss in 1981 and was produced in Italy by Sandrigarden during the **1980s**. The piece is made from steel and plastic and was part of the **collection** of the Stedelijk Museum of Amsterdam.



## ABOUT STICK STOOLS

Throughout history there have been several manufacturers who opted for this style of chairs, stick stools and cane chairs. Among the prominent manufacturers we could name the well-known manufacturer Thonet, who in 1885 (19<sup>th</sup> Century) produced his first cane chair.

Made of natural wood, the assembly system is very similar to the Ulisse stool.

We can find another great, more recent example, in this case, an idea by the Italian designer Gaetano Pesce, who in 1995 designed the Umbrella Chair, and produced by Zerodisegno.

## DETAILS

### Creator

Ivan Loss (designer)  
Sandrigarden (Manufacturer)

### Period

1980-1989

### Condition

Excellent  
Wear consistent with age and use  
Attribution mark

### Design

Ulisse folding stool  
4 units available

### Materials

Lacquered steel  
Plastic

### Dimensions

35x36x73







**ZINO** CHAIR designed by **Harvink**

**SKU** YV113





Memphis **design** inspired highback dining chairs model 'Zino' by dutch company Harvink. The chairs have a **triangular** natural wooden back panel with a fantastic **patina**. The seats are upholstered with their original green upholstery.

---



## ABOUT HARVINK

You have to grab a Harvink and never let go. Eye-catching in design, unparalleled in comfort. Wonder and amazement compete for your attention. It is a piece of furniture that focuses on relaxation and allows you to wonder effortlessly. An objective that has been pursued within Harvink since its foundation in 1947 and will continue to be decisive in the future. Harvink's signature stands for magnificent furniture. Recognizable as a bit quirky, hand-produced craftsmanship. The Harvink art of creating becomes tangible in frame and upholstery. Crafts that are watched with a carpenter's eye and in which you also have a share!

## DETAILS

**Creator**  
Harvink (Manufacturer)

**Period**  
1980-1989

**Condition**  
Good  
Wear consistent with age and use

**Design**  
Pair of 'Zino' chair

**Materials**  
Wood  
Steel  
Green fabric

**Dimensions**  
43x44x92





**TATLIM** CHAIR designed by **Marco Mencacci**

**SKU** YV114



"Tatlim" chair designed by Marco Mencacci in 1988 for Sawaya & Morini. Presented at the Milan fair in 1991. **Limited edition**. Seat and back entirely in **maple** wood. Openwork circular folder. Assembly by a metal bracket treated with nikel.



## ABOUT MARCO MENCACCI

Italian-born and Paris-based Marco Mencacci is a multidisciplinary and polyhedric architect and artist. He has an impressively rich background, ranging from interior design, home decor to theatre and television scenography.

His oeuvre has been presented and exhibited at prestigious international cultural institutions such as the Centre Georges Pompidou, the Corning Museum of Glass in New York City and the Museum of Contemporary Art in Rochechouart. He has partnered with Chanel, Hermès, Louis Vuitton, Barovier & Toso and Maison Bernardaud for numerous eclectic creations and collections.

## DETAILS

**Creator**  
Marco Mencacci (Designer)  
Sawaya&Morini (Manufacturer)

**Period**  
1990-1999

**Condition**  
Excellent  
Wear consistent with age and use

**Design**  
Tatlim chair  
2 units available

**Materials**  
Wood

**Dimensions**  
36x39x94







**LES ARCS** chair designed by **Charlotte Perriand**

**SKU** YV115





These **unusual** and rare vintage chairs were designed in **1968** by the French architect & designer Charlotte Perriand to be used in the **French Ski Resort 'Les Arcs en Savoie 1600'**. They were commissioned to be made by Cassina, one of the **best** Italian furniture makers.



## ABOUT CHARLOTTE PERRIAND

**Charlotte Perriand**, (born October 24, 1903, Paris, France died October 27, 1999, Paris), French designer known for iconic 20th-century furniture, such as the LC "Fauteuil Grand Confort" set of Modernist living-room furniture that includes a chair, two sizes of sofas, and an ottoman, one of many collaborations with Le Corbusier and his cousin, Pierre Jeanneret. Projects varied as well as locations: design of unadorned rustic lodges in the French Alps (1938), kitchen prototypes for Unité d'Habitation in Marseille (1950) and Tokyo (1959), and commercial interiors for Air France in London (1958). Her final and largest project—the ski resort of Les Arcs in Savoy (1967–85)

## DETAILS

**Creator**  
Charlotte Perriand (designer)  
Cassina (Manufacturer)

**Period**  
1960-1969

**Condition**  
Good  
Wear consistent with age and use

**Design**  
Les Arcs chair

**Materials**  
Chrome Plating  
Cognac leather

**Dimensions**  
52x48x82





**SYRIAN** ARMCHAIR Late 19th Century

**SKU** YV116





This **Syrian** armchair is richly carved with oriental motifs all over its wooden structure. The seat receives a soft and comfortable **leather** cushion. The back is flat and rectangular in shape. **Beautifully** executed and openwork, it is divided into several squares.



## ABOUT SYRIAN CHAIRS

The Syrian culture is not only rich in Islamic Art, but being at the cross roads between Africa and Europe, the country has adopted many traits from the cultures of both continents as well. One cannot help but fall in love with such a rich history and culture. The heritage comes to life as soon as you lay your eyes on a piece of Syrian furniture. This craftsmanship is integrally embedded in Syrian culture, with the techniques used in creating works of art being handed down from generation to generation. No machine can ever produce something remotely close to the craftsmanship displayed by the Syrians in their creations.

## DETAILS

**Creator**  
Unkowed (Designer)  
Handmade (Manufacturer)

**Period**  
19<sup>th</sup> Century

**Condition**  
Regular  
Wear consistent with age and use  
Some part need restore

**Design**  
Syrian armchair

**Materials**  
Wood  
Leather

**Dimensions**  
36x39x94









Colorful, light-hearted and with a touch of **cultural** challenge: this rotational-molded polyethylene stool draws inspiration from the **African** tradition.



## ABOUT MATTEO THUN

A pupil of Oskar Kokoschka and Emilio Vedova at the Salzburg Academy and graduate of the University of Florence, Matteo's formative professional years were spent under the guardianship of Ettore Sottsass. Together, they co-founded the globally renowned Memphis Group in 1981. Several years a professor in ceramic design at the Vienna University of Applied Arts and creator of era-defining pieces, Matteo founded his eponymous design studio in 1983 where he would establish himself as one of his generation's most influential voices and talents.

## DETAILS

### Creator

Matteo Thun (Designer)  
Magis (Manufacturer)

### Period

2000-2009

### Condition

Excellent  
Wear consistent with age and use  
Attribution mark

### Design

Tam Tam stool  
Pink color available

### Materials

Plastic

### Dimensions

56x26x35





**AFRICA CHAIR SET** designed by **Afra & Tobia Scarpa**

**SKU** YV118





These 4 dining chairs are designed by **Afra & Tobia Scarpa** and are titled 'Africa' being part of the **Artona collection** by Maxalto. The explicitly **sculptural** grand chairs are signed with impressed manufacturer's mark to each example.

\*this item is not available for rent as know, contact for more information



## ABOUT AFRA & TOBIA SCARPA

**Afra & Tobia Scarpa** Italian architects and designers. Their pieces can be found in museums across the United States and Europe, including collections in MoMA and the Louvre Museum. They have collaborated with companies such as B&B Italia, San Lorenzo Silver, and Knoll International. They have won a number of awards such as the Compasso d'Oro in 1969 to the International Forum Design in 1992. Their design work consists of architecture and everyday household items including, furniture, clothing, interior design, art glass.

## DETAILS

### Creator

Afra & Tobia Scarpa (designer)  
Maxalto (Manufacturer)

### Period

1970-1975

### Condition

Excellent  
Wear consistent with age and use  
Attribution mark

### Design

Set of 4 Africa chair

### Materials

Walnut wood  
Leather (black)

### Dimensions

78x78x56





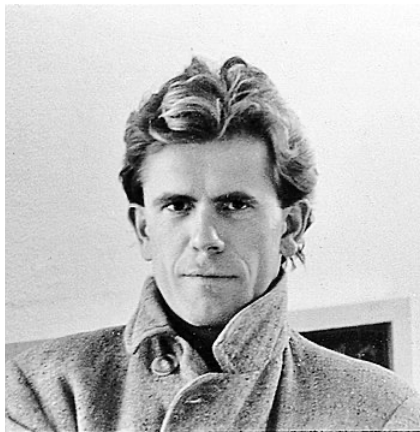


**FM60** armchair designed by **Radboud Van Beekum**

**SKU** YV119



This chair was designed in attribution to Gerrit Rietveld.  
**Radboud van Beekum** only also wants to let people sit **comfortably**. Rietveld said: If you want to sit comfortably, you need to lie down



## ABOUT RADBOUD VAN BEEKUM

**Radboud Van Beekum** studied architectural design at the Gerrit Rietveld Academy in Amsterdam. After his studies he worked from his own design office in Amsterdam as a furniture maker and designed interiors and furniture for individuals, companies and institutions, including the Anne Frank House . During this period he also designed the well-known cube chair FM60, which was launched in 1981 in collaboration with the company Pastoe . A year earlier it had been awarded at the Triennale for furniture design in Poznan. Radboud van Beekum died on April 13, 2020 during a retreat in Zutphen.

## DETAILS

**Creator**  
Radboud Van Beekum (designer)  
Pastoe (Manufacturer)

**Period**  
1980-1989

**Condition**  
Good  
Wear consistent with age and use

**Design**  
FM60 armchair  
Ask for side table availability  
Ask for the color availability

**Materials**  
Lacquered wood  
Lacquered iron

**Dimensions**  
68x68x61





USM Haller modular system designed by Schärer Jr & Haller

SKU YV120





Whether for home or office – USM **modular** furniture adapts to your individual **needs**. Get inspired and browse by rooms. Design your modular storage units that give you control over **organizing** your space. Form follows you – design nightstands, dressers, storage and shelving and everything you can **imagine**.



## ABOUT USM HALLER

It was originally a family-run metal factory housed in a traditional building, but it was Paul Schärer Jr., grandson of the founder and father of the current leader, who, with the intention of strengthening industrialisation, steered USM into the modern world in the early 1960s.

In 1961, he commissioned the Swiss architect Fritz Haller, one of the most influential Swiss architects of the second half of the 20th century, to design a new type of flexible building that could accommodate, on the one hand, the administration of the company, and on the other, adapt to various manufacturing processes, and be able to evolve over time with the rapid development of the company.

## DETAILS

### Creator

Paul Schärer Jr. (designer)  
Fritz Haller (designer)  
USM Haller (Manufacturer)

### Period

1960-1969

### Condition

Good  
Wear consistent with age and use

### Design

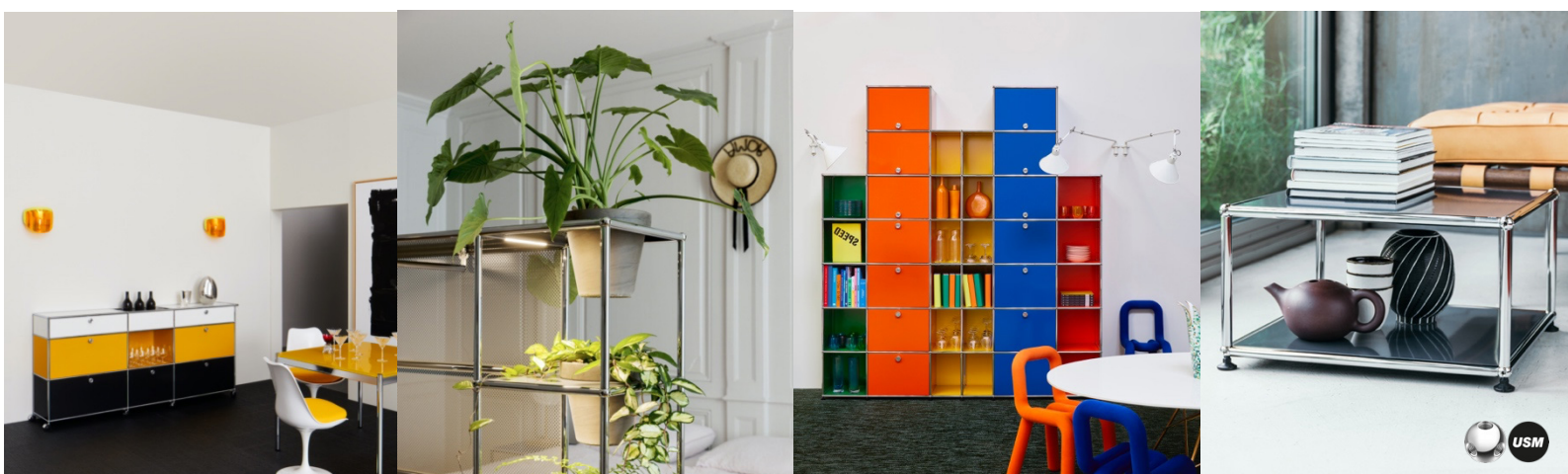
USM Haller Modular system  
Ask for your configuration  
Ask for the colors availability

### Materials

Metal  
Lacquered iron

### Dimensions

Depending on stock







**TOGO** modular sofa designed by **Michel Ducaroy**

**SKU** YV121

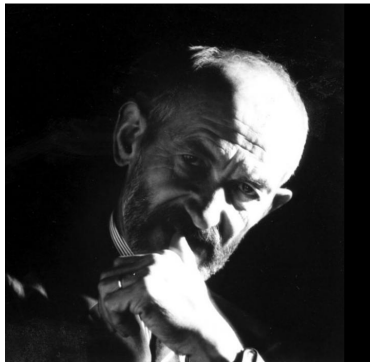


# YAYA

VINTAGE BARCELONA



A collection of all-foam cushion seating with **no hard points**. Its characteristic design will **fit** into both traditional and contemporary furnishing styles. Plain, fabrics, leather, canvas could be available, choose the best for your **home**.



## ABOUT MICHEL DUCAROY

Born into a family of industrialists and designers of contemporary furniture. Trained at the Ecole Nationale des Beaux Arts, Lyon.

Having joined the Roset Company very early on, at a time of rapid growth, he has constant access to insightful marketing and a highly capable technical team. He has responsibility for the research, development and design submissions vital to ensuring the company's brands ever-more secure positioning on the market. Togo, a 'seat-cushion' which still forms part of the Ligne Roset collection today.

## DETAILS

### Creator

Michel Ducaroy (designer)  
Ligne Roset (Manufacturer)

### Period

1970-1979

### Condition

Good  
Wear consistent with age and use

### Design

TOGO Modular sofa  
Ask for the stock  
Ask for the colors availability

### Materials

Fabric, leather  
Depending on stock

### Dimensions

Depending on stock  
and configuration







**ANDREA** chair designed by **Josep Llusca**

**SKU** YV122



**ANDREA** is the result of empirical research carried out into the center of gravity of chairs. **ANDREA** represents an encounter between the traditional craftsman and modern industrial manufacturing.



## ABOUT JOSEP LLUSCÀ

Graduate in Industrial Design from the Eina School in **Barcelona**, he has been a professor in its Product Design Department and a member of its Board of Governors. His projects have been the subject of studies and reviews in numerous specialised publications, books and monographs. They also form part of the permanent collections of several design museums and have been included in many international exhibitions. He has won a number of prestigious international design awards

## DETAILS

**Creator**  
Josep Llusca (designer)  
Andreu World (Manufacturer)

**Period**  
1980-1989

**Condition**  
Good  
Wear consistent with age and use

**Design**  
Andrea chair  
Ask for the models availability

**Materials**  
Aluminium  
Wood / Foam

**Dimensions**  
54x60x87







**TIGER ART GAULINO** chair designed by **Oscar Tusquets**

**SKU** YV123



# YAYA

VINTAGE BARCELONA



«A limited edition of **50 unique pieces**, where the seat has been painted one by one by **myself**, with the interpretations of a tiger's skin.» The frame is stained, revealing the natural grains of the **ash**.



## ABOUT OSCAR TUSQUETS

Born in **Barcelona** in 1941, Oscar Tusquets presents himself publicly as an architect by training, a designer by adaptation, a painter by vocation and a writer through the desire to make friends. In other words, the prototype of the complete artist that the specialisation of the modern world has steadily driven to extinction. His professional career as a whole has been honoured with the Medalla de Oro al Mérito en las Bellas Artes [Gold Medal for Merit in the Fine Arts], the insignia of Chevalier de l'Ordre des Arts et des Lettres [Knight of the Order of the Arts and Letters] and the Creu de Sant Jordi [Cross of Sant Jordi]

## DETAILS

**Creator**  
Oscar Tusquets (designer)  
BD Barcelona (Manufacturer)

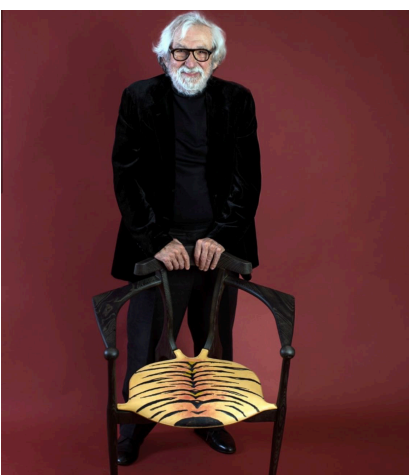
**Period**  
Tiger edition 2016

**Condition**  
Excellent  
New production

**Design**  
Tiger Art Gaulino  
Limited edition (50 units)

**Materials**  
Leather (hand painted)  
Ash wood

**Dimensions**  
70x55x76



## + INFO YAYA VINTAGE SERVICES

Vintage & Design store

Furniture Hunting

Logistics & Shipping Management

Renting for creative art direction companies

Renting for events

Auction Management

## CONTACTS

**Yaya Ni**

yaya@yayavintage.eu  
+34 684450531  
(Asia)

**Aleix Martin**

aleix@yayavintage.eu  
+34 606397389  
(Spain)

**Isaac Fernandez**

isaac@yayavintage.eu  
+34 615847552  
(Worldwide)

# YAYAVINTAGE.EU



+34 684450531



yaya.vintage



+34 615847552